



Sanctioned Tournament Guidelines

Written by the British Roundnet Tournament Committee

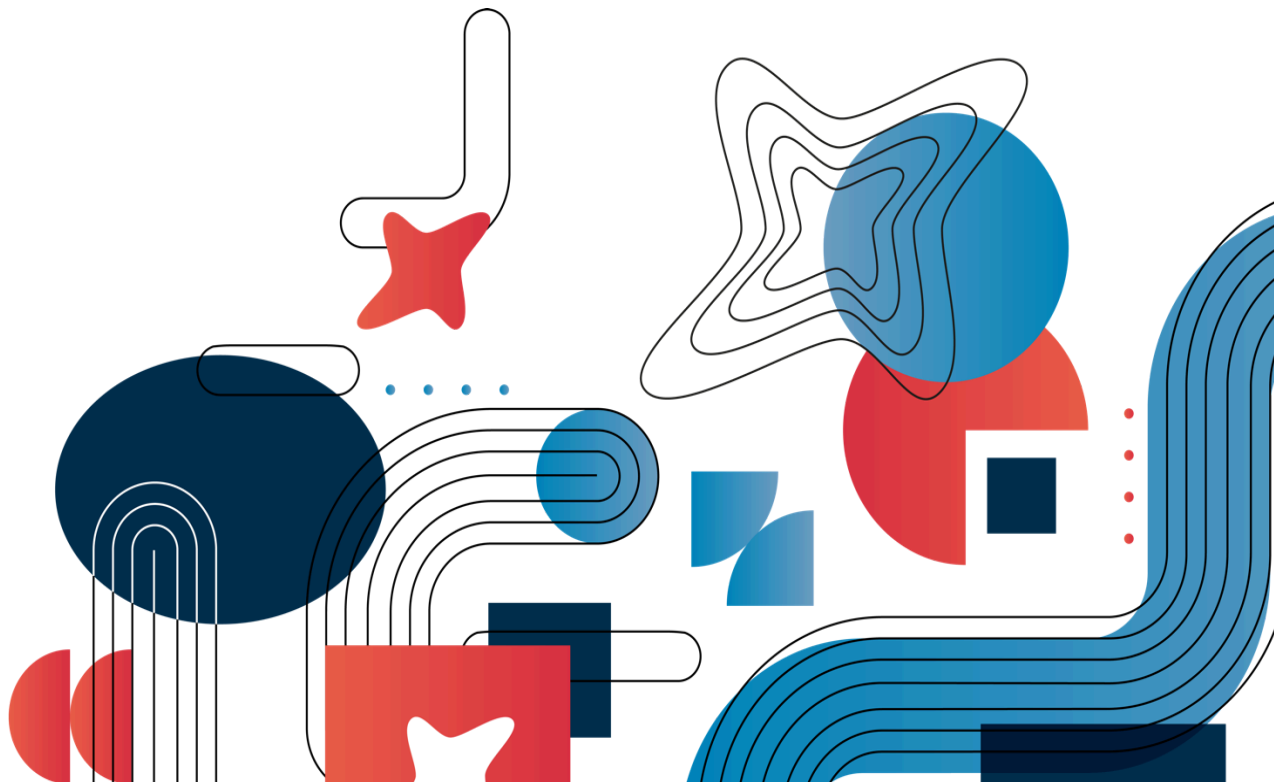


Table of Contents

Abbreviations and Terms	2
Why host a BR Sanctioned Tournament?	2
Requirements	3
Section 1: Tournament Setup	4
1.1 Tournament Rules and Equipment	4
1.2 Registration	5
Section 2: Tournament Format	5
2.1 Pre-Tournament Best Practice	5
2.2 Tournament Format	6
Section 3: BR Rankings	6
3.1 BR Ranking Eligibility	7
3.2 Ranking Multipliers	7

Abbreviations and Terms

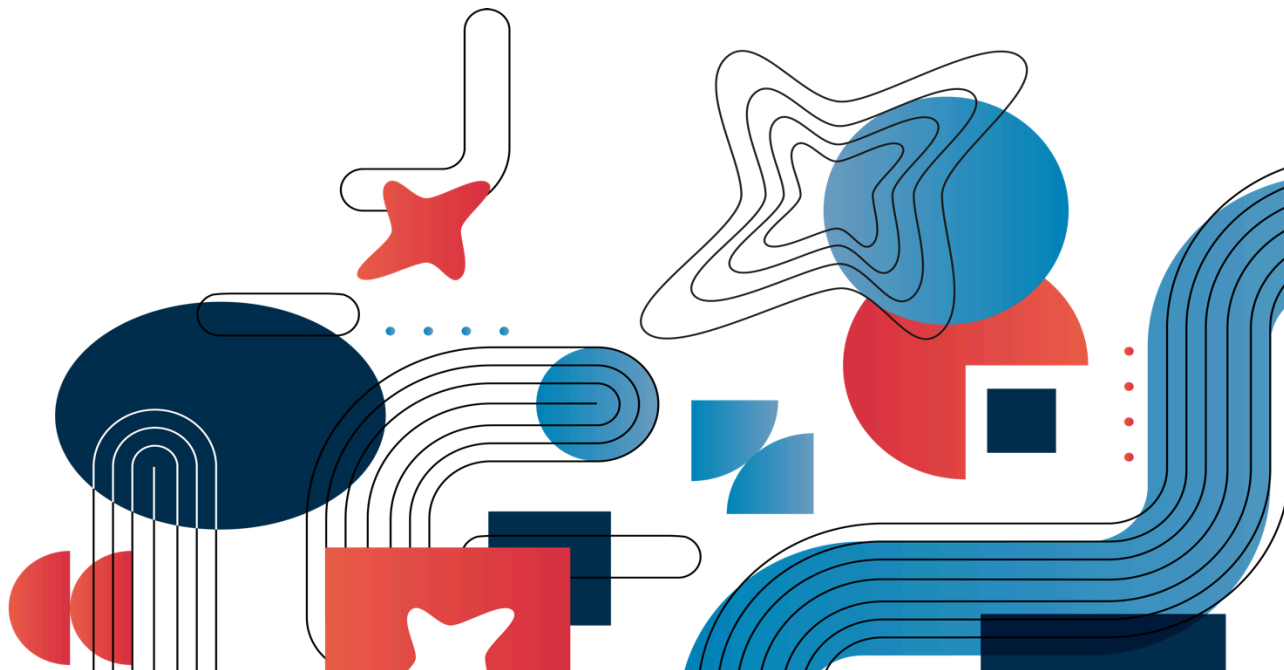
BR	British Roundnet
IRF	International Roundnet Federation
TD	Tournament Director



Why host a BR Sanctioned Tournament?

- **Your event will be part of the official 2024 British Roundnet Calendar and we will promote your event** on our website, social media channels, and in our newsletters. Additionally, your event will appear on the [BR Fwango page](#), making it easier for players to find.
- **We will support you in organizing the event** through meetings with our Tournament Committee, equipment lending (where possible), and Fwango tutorials, but your club will **keep all profits from the event**.
- **Your event's results will count towards National Rankings** if the criteria in section 3.1 are met. This will help increase the number of registrations as players/teams look to climb the national rankings.
- **You will be able to use British Roundnet's branding to promote your event** to the community, which will boost registration. This will also be helpful if you are looking to secure sponsorship for your event.
- **You will receive up to £200 in financial support** including trophies, banners and vouchers where possible. This will be allocated based on a club-by-club basis.

Register your interest in hosting a BR Sanctioned Tournament [here!](#)



Requirements

- Sanctioned events must be run by a club affiliated with British Roundnet (affiliation form [here](#)).
- Your sanctioned event must have been selected by the British Roundnet team.
- All players attending a sanctioned event must have a valid 2024 British Roundnet membership.
- A risk assessment must be completed upon selection by the British Roundnet team. A template will be provided.



Section 1: Tournament Setup

1.1 Tournament Rules and Equipment

- 1.1.1 Tournament players must adhere to the latest [IRF rules](#).
- 1.1.2 Tournament play must use equipment in line with IRF specifications.
- 1.1.3 All players are required to be current British Roundnet members.
- 1.1.4 The Tournament should have enough sets for all teams to play simultaneously with a minimum of two balls per net. Exceptions will be considered on a case-by-case basis by British Roundnet based on field availability, tournament size, and whether the tournament is held indoors.

1.2 Registration

- 1.2.1 Tournament registration must be set up on [Fwango](#), and British Roundnet must be designated as a host along with your organization.
- 1.2.2 Registration must offer multiple open divisions to cater to various skill levels (e.g., Advanced, Intermediate, Beginner) and a Women's division. This is subject to the number of participants registered. Divisions can be merged if there aren't enough teams registered for specific divisions.
- 1.2.3 Division (if applicable), team name, and player names should be collected at registration, as well as player emails and phone numbers (to communicate tournament details). **All participants must be current BR members** (available through the British Roundnet [Fwango page](#)).
- 1.2.4 The following details must be clearly outlined and established when registration opens:
 - 1.2.4.1 Tournament date and time, including an estimated schedule
 - 1.2.4.2 Broad tournament location - teams must be notified of field selection and location once the reservation is confirmed
 - 1.2.4.3 Tournament format for pool play and bracket stages (best of three? play to 21 or 15? hard cap?)
 - 1.2.4.4 Divisions with contingencies in the event a division does not have enough teams to make
 - 1.2.4.5 Playing surface
 - 1.2.4.6 Specify if participants need to bring equipment (e.g., sets, balls, specific footwear)
 - 1.2.4.7 Specify if there is access to water, bathrooms and showers (provisions must be made if this is not the case)
 - 1.2.4.8 Any changes must be communicated to registrants at least two days prior to the tournament with an offer of a refund for any teams who no longer wish to participate based on the changes

1.2.5 Sign ups must be closed a minimum of **three days** before the tournament date to allow for the seeding of groups and any other last minute organizational details that need to be addressed (e.g. ensuring there is enough equipment for the number of participants)

Section 2: Tournament Format

2.1 Pre-Tournament Best Practice

2.1.1 An email should be sent out to all tournament participants 48 hours before the tournament, detailing:

2.1.1.1 Precise location (e.g., field number) and any information on how to access the field if participants are likely to get lost

2.1.1.2 Parking availability

2.1.1.3 If participants should bring their food and drink for the day or if it is available on site or within walking distance

2.1.1.4 A finalized tournament schedule

2.1.1.5 Any last minute changes to the tournament format

2.1.2 Field set up should be completed at least 30 minutes before the start of the tournament to allow adequate time for teams to check-in and warm up. All courts must be fully lined according to the [IRF specifications](#) (section 1.2).

2.1.3 Announcements should be made before the start of the tournament to inform participants how the tournament will run and recap any rule updates or points of interest.

2.1.4 After announcements, the TD should be prepared to give first-time roundnet tournament attendees a brief review of tournament rules and etiquette and answer any questions they may have.

2.2 Tournament Format

2.2.1 A typical tournament includes a pool play and bracket stage.

2.2.2 All sets must be played to either 15 or 21. Playing to 21 is recommended when possible. A "hard cap" of 21 or 25, respectively, is allowed during pool play, but should be avoided during bracket play, if possible.

2.2.3 Pool play games can be a single set, two sets (meaning teams may draw a series by winning one set each), or a best of three series. This decision should be made based on the number of teams per pool and in a way to allow enough time for a good bracket play.

2.2.4 Bracket matches should consist of best of 3 series for both the winners and consolation brackets. Whether it is played to 15 or 21 is dependent on the tournament schedule; however, it is recommended the later stages of the bracket are played to 21.

2.2.5 Brackets are single elimination.

2.2.6 Bracket can be seeded via division rankings from pool play (available through Fwango) or pre-seeded by ranking within individual pools (i.e., first place from pool A plays third from pool C).

2.2.7 A consolation bracket must be provided for teams to play out for places in each round of the main bracket. This provides each team a guaranteed minimum of 2 bracket stage series. Fwango will automatically set this up. It is recommended to make these series best of three to 15.

Section 3: BR Rankings

3.1 BR Ranking Eligibility

3.1.1 Sanctioned tournaments will only count towards the BR Rankings if it meets the following criteria:

3.1.1.1 All participants must be current BR members (available through the British Roundnet [Fwango page](#))

3.1.1.2 There are more than 12 teams registered for open divisions and/or 5 teams for women's divisions

3.1.1.3 The tournament's Fwango page is kept up-to-date with accurate results

3.1.1.4 If any of the criteria are not met, the event's results will not count towards the BR Rankings but the event will still keep its sanctioned status

3.2 Ranking Multipliers

3.2.1 A multiplier will be used when inputting points gained from sanctioned events. This differentiates sanctioned tournaments from BR-hosted major tournaments, which will have a higher multiplier.

3.2.2 The multiplier will increase depending on the number of teams registered in a division to reflect the competitiveness of the event.

3.2.2.1 The scale for open divisions is as follows:

12-15 teams

x.05

16-19 teams

x0.6

20+ teams

x0.75

3.2.2.2 The scale for women's divisions is as follows:

5-7 teams

x.75

8+ teams

x0.9